

# EAD 1900 – ETHERNET ACCESS DEVICE

blue wing

## PERFORMANCE

with up to 1000 Mbps internal routing performance one of the fastest Residential Gigabit Ethernet Access Devices

**SIZE** 17 cm × 20 cm – the smallest EAD

**VARIETY** Router, WLAN, POTS, USB



### HIGH PERFORMANCE GTTH GATEWAY

#### The new generation CPE

The EAD 1900 is an easy-to-install high-performance home gateway for Gigabit-to-the-home (GTTH) networks. Packed with features to support triple-play services including high-definition TV services, the EAD 1900 is the ultimate home gateway for fiber and copper networks. With four Gigabit LAN ports and an USB port for external hard-drive, the EAD 1900 is designed for residential customers, small offices and medium size businesses.

### Supports GTTH

The EAD 1900 WAN is multi-rate and supports 100 Mbps and 1 Gbps speeds on the copper link. The network operator can deploy the Gigabit EAD 1900 today and be ready for the next generation access. As the network is upgraded, there is no need to revisit the customer and change the equipment. The EAD will automatically detect the speed that is used.

### Wirespeed firewall and NAT

The EAD 1900 has a high-performance network processor which allows the unit to perform firewall and network address translation at wirespeed. This extends the lifetime of the EAD into the Gigabit Ethernet age.

### IPv6 Ready

The EAD 1900 also operates as an IPv6 router, supporting stateful address assignment on the WAN with prefix delegation to allow native IPv6 routing into the home. In addition, 6to4 and 6rd transition mechanisms are also supported to allow deployment into legacy non-IPv6 networks.

### Managed by TR-069 or SNMP

TR-069 is widely deployed for the management of DSL modems. The EAD 1900 has a built-in TR-069 client that allows an existing AutoConfiguration Server (ACS) to also manage the EAD. If no ACS is available, the EAD can be managed using the standard SNMP and TFTP protocols, for configuration and data collection for monitoring services.

### VoIP and WiFi

The EAD 1900 is available in multiple variants which support POTS telephony with a built-in SIP Voice-over-IP client. Models with an 802.11b/g/n access point support up to 300 Mbps wireless communication, which gives customers access to the network anywhere in the home without having to build a wired network.

### Easy 1-click installation

The EAD 1900 uses a click-on mechanism for easy integration with the EAD Base Ethernet termination unit. This gives network builders a cost-effective and robust solution for terminating Ethernet access.

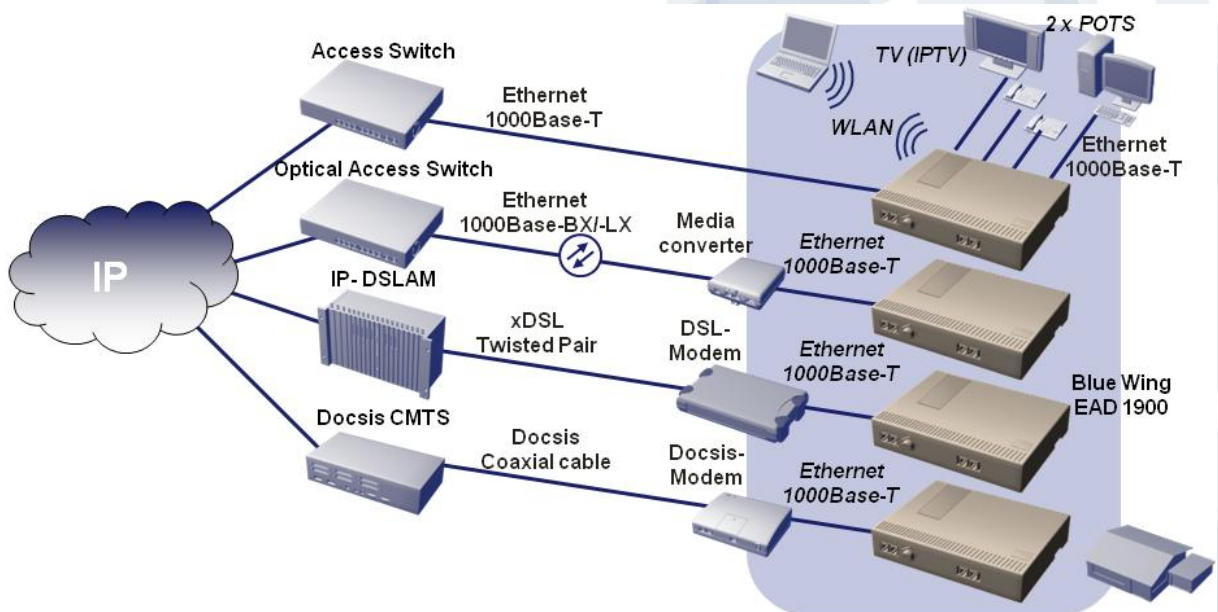
Once the EAD Base and Ethernet connector have been installed, customers can simply install the EAD 1900 unit themselves with the 1-click installation design. No special skills or patch cables are required.



# EAD 1900 – ETHERNET ACCESS DEVICE



## APPLICATION



## TECHNICAL DATA

### WAN interface

- Ethernet-WAN (electrical): 10/100/1000Base-TX
- Autodetection FE / GigE

### LAN interface

- Ethernet LAN: 4 × 10/100/1000Base-TX RJ45; Auto MDI / MDIX
- Router or Switch Mode

### Telephone services (POTS)

- Voice function
- Phone sockets: 2 × RJ11
- Additional voice codecs: G.722 Wideband (HD voice support)
- Supplementary services: 3PTY; CLIP; CLIR; HOLD; CW etc.
- Country-specific analogue parameter set
- Line testing for a/b ports

### Quality of Service

- Diffserv: Layer 3 (IP)
- Class of Service: IEEE 802.1p, Layer 2 (Ethernet) QoS mechanism, 4 hardware queues for prioritization
- IGMP snooping: v2 and v3

### Traffic classification and security

- VLAN: Services and port separation
- Hybrid links: Tagged and untagged traffic simultaneously on the same link

### Management

- Protocols: TR-069, SNMP v1/v2 including MIB-II and enterprise-specific MIB
- HTTP server: Single access level for end-user configuration of home network features
- TFTP/HTTP client: Software download
- DHCP: Configuration support

### USB interface

- Standard: 1 × USB 2.0 (storage support)
- For external hard drive

### WLAN interface

- Standards 802.11g,b,n
- RF output level: ≤ 70 mW
- Maximum capacity: 300 Mbps

# EAD 1900 – ETHERNET ACCESS DEVICE

blue wing

## TECHNICAL DATA

### Physical parameters

#### Power supply

- Power requirements: 7.5 W ... 12.0 W
- Power supply: 12 V DC, 1.5 A, external plug-in wall adapter

#### Casing

- Dimensions (W × D × H): 202 mm × 170 mm × 53 mm
- Weight: approx. 445 g

#### Environmental conditions (operation)

- Air temperature: 0 °C ... +40 °C
- Rel. humidity: 5 % ... 95 %, non-condensing

### EMC & Safety

- CE mark
- FCC Part 15, Subpart B
- EN 60950-1
- EN 60825-1

**Note:** All rights reserved. Subject to modifications due to technical progress. Errors and printing mistakes may occur.

### PURCHASE ORDER INFORMATION

Product designation	Order number
Blue Wing EAD 1903 (with WLAN and USB 2.0)	900362
Base Plate (for pre-installation)	900365